

ENVIRONMENTAL MANAGEMENT IN VITICULTURE - LANGHORNE CREEK DEVELOPMENT OF A BIODIVERSITY PLAN



L.E. Jaensch¹, R.G. Trezona²
¹Langhorne Creek Wine Industry Council, PO Box 78 Langhorne Creek SA 5255. ²3 Angas Place Strathalbyn SA 5255. info@langhornewine.com.au

FROM STRONG BEGINNINGS

Langhorne Creek has a long history of natural resources management and is nationally recognised for its land and water management initiatives under a regional 'Water Allocation Plan' and related 'Irrigators Code of Practice'.*

The innovative region was identified in 2001 to conduct a pilot program under the Murray Darling Basin Commission 'Watermark' environmental stewardship program. The 'Environmental Management in Viticulture' project was established in Langhorne Creek and provides an Environmental Management System (EMS) based on continual improvement to meet catchment goals.

WHAT HAS BEEN ACHIEVED

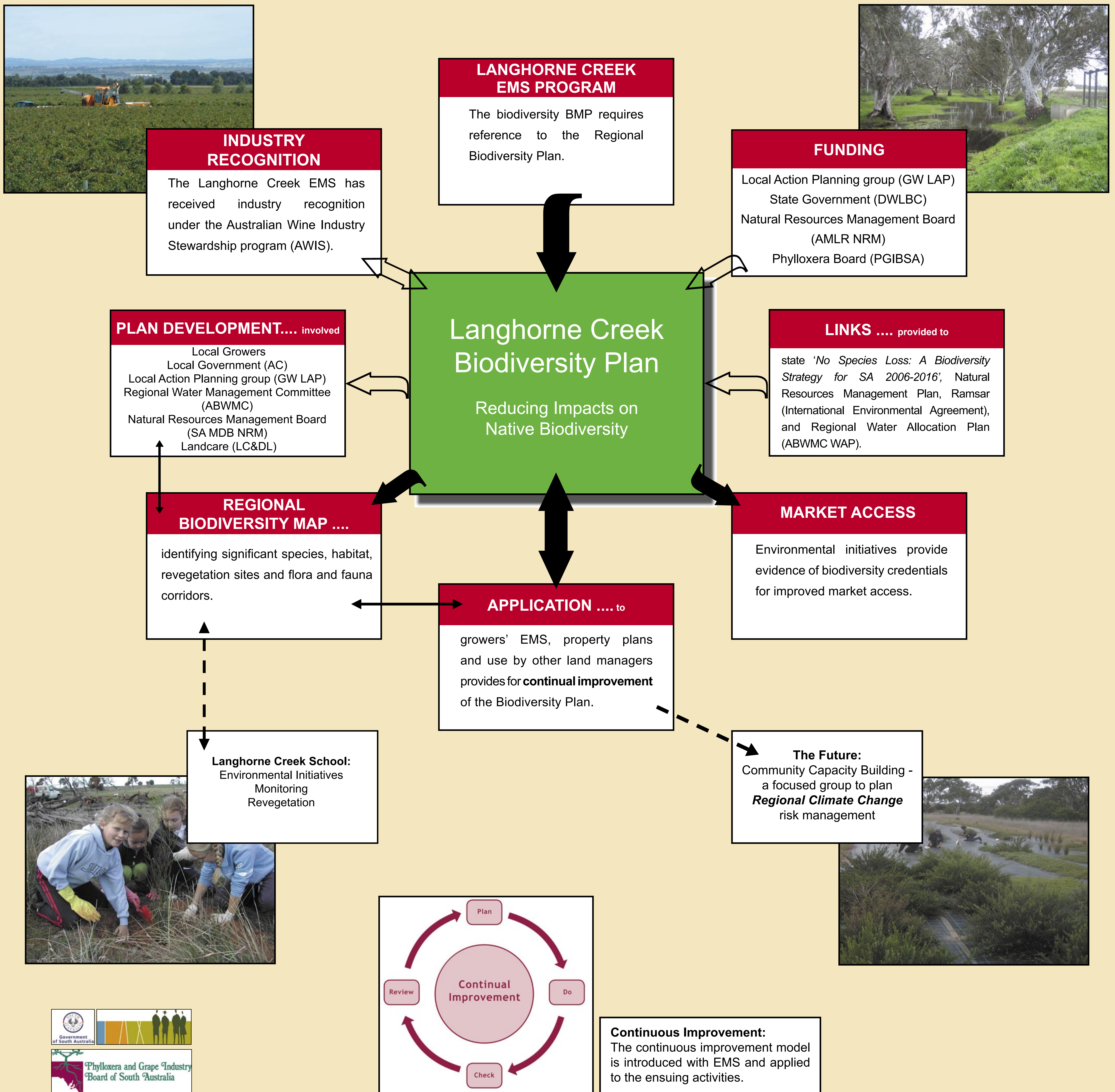
At a regional level **Best Management Practices (BMPs)** have been developed for the management areas of Chemicals and Pests, Equipment, Machinery and Vehicles, General Practices, Soil and Fertilisers, Vineyard Establishment, Waste and Water Use, in line with the industry tool VERA (Viticulture Environmental Risk Assessment) developed by the Cooperative Resource Centre for viticulture.

It was apparent that a Biodiversity BMP was required with reference to a regional plan and catchment approach. The first Langhorne Creek Biodiversity Plan was compiled and launched in February 2007.

LOOKING TO THE FUTURE

In carrying out environmental risk management growers refer to the regional biodiversity plan to complete individual property objectives. A regional biodiversity map provides for the identification of significant environmental assets and potential flora and fauna corridors.

Future goals for the region include **engaging all generations and the broader community** addressing issues of climate change. The capacity of the community has been enhanced to address future environmental issues.



Acronyms: ABWMC – Angus Bremer Water Management Committee, AC - Alexandrina Council, AMLR NRM Board – Adelaide and Mount Lofty Ranges Natural Resources Management Board, AWIS - Australian Wine Industry Stewardship, BMPs – Best Management Practices, DWLBC - Department of Water, Land and Biodiversity Conservation, EMS – Environmental Management System, GW LAP – Goolwa to Wellington Local Action Planning (Board), LC&DL – Langhorne Creek and Districts Landcare, PGIBSA – Phylloxera and Grape Industry Board of South Australia, SA MDB NRM – South Australian Murray Darling Basin Natural Resources Management Board, WAP – Water Allocation Plan, WFA – Winemakers' Federation of Australia.

Acknowledgements: Rural Solutions SA, Phylloxera and Grape Industry Board of South Australia

* www.angasbremerwater.org.au

www.langhornewine.com.au

August 2007